



IGF1-R (954 - 1367)

Long Name:

Insulin-like Growth Factor 1 Receptor [954 - 1367]

Catalog Number (DU Number):

DU4670

Accession:

NM_000875

Expression

baculovirus

Terminus and Tag:

N-Term 6His Uncleaved

Purification Method:

Ni²⁺-NTA agarose

Enzymatic Assay Format:

Standard filter binding assay

Enzymatic Buffer:

50 mM Tris-HCl pH 7.5, 0.1 % 2-mercaptoethanol, 0.1 mM EGTA, 10 mM MgAc

Enzymatic Substrate:

KKKSPGEYVNIEFG Final concentration: 300 μ M

Calculated Molecular Mass:

Mono-Isotopic Mass: 50, 164.46 daltons

Average Mass: 50, 197.02 daltons

Protein Activity:

Constitutively Active

Purity:

>80 %

Storage Buffer:

50 mM Tris-HCl pH 7.5, 270 mM Sucrose, 150 mM NaCl, 0.1 mM EGTA, 0.1 % 2-mercaptoethanol, 0.2 mM PMSF, 1 mM Benzamidine.

Storage Temperature:

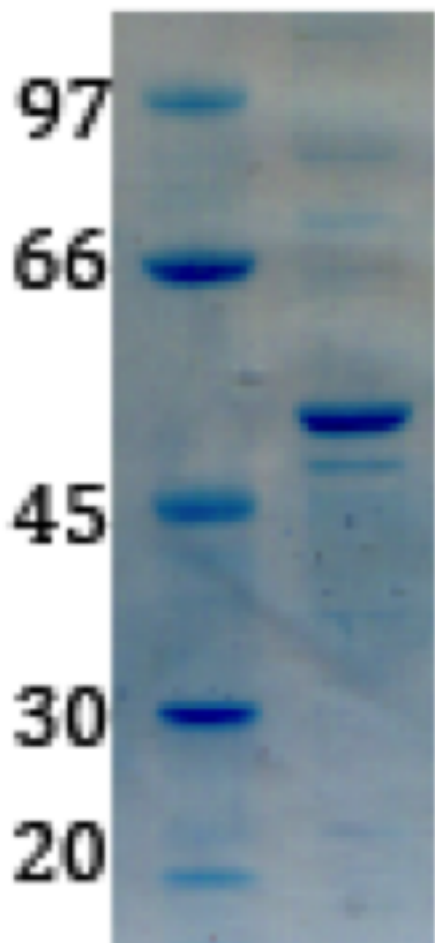
-70 °C [Long term stability to be determined]

Theoretical pI:

5.25

Gel Information :

Gel Image 1:



Native Sequence:

Amino acids M954 – C1367 (end) of human IGF1R. Residue M29 of the fusion protein is equivalent to M954 of the native enzyme. The His(6) tag is located at residues 5 – 10.

Protease Cleavage:

rTEV (ENLYFQG) residues 18 - 24

Cloning Sites:

BamH1 and Not1 sites of pFastBAC HTb

Price per aliquot (100µg):

£110.00