



## HIPK2 (165 - 564)

Catalog Number (DU Number):

**DU5524**

Accession:

**AF326592**

Expression

**bacteria**

Terminus and Tag:

**N-Term GST Uncleaved**

Purification Method:

**GSH Sepharose**

Enzymatic Assay Format:

**Standard filter binding assay**

Assay Buffer:

**50 mM Tris-HCl pH 7.5, 0.1 mM EGTA, 0.1 % 2-mercaptoethanol, 10 mM MgAc**

Assay Substrate:

**Myelin basic protein Final concentration: 0.3 mg/ml**

Calculated Molecular Mass:

**Mono-Isotopic Mass: 72, 917.84 daltons**

**Average Mass: 72, 965.07 daltons**

Purity:

**85 %**

Storage Buffer:

**50 mM Tris-HCl pH 7.5, 270 mM Sucrose, 150 mM NaCl, 0.1 mM EGTA, 0.1 % 2-mercaptoethanol, 0.02 % Brij-35, 1 mM benzamidine, 0.2 mM PMSF**

Storage Temperature:

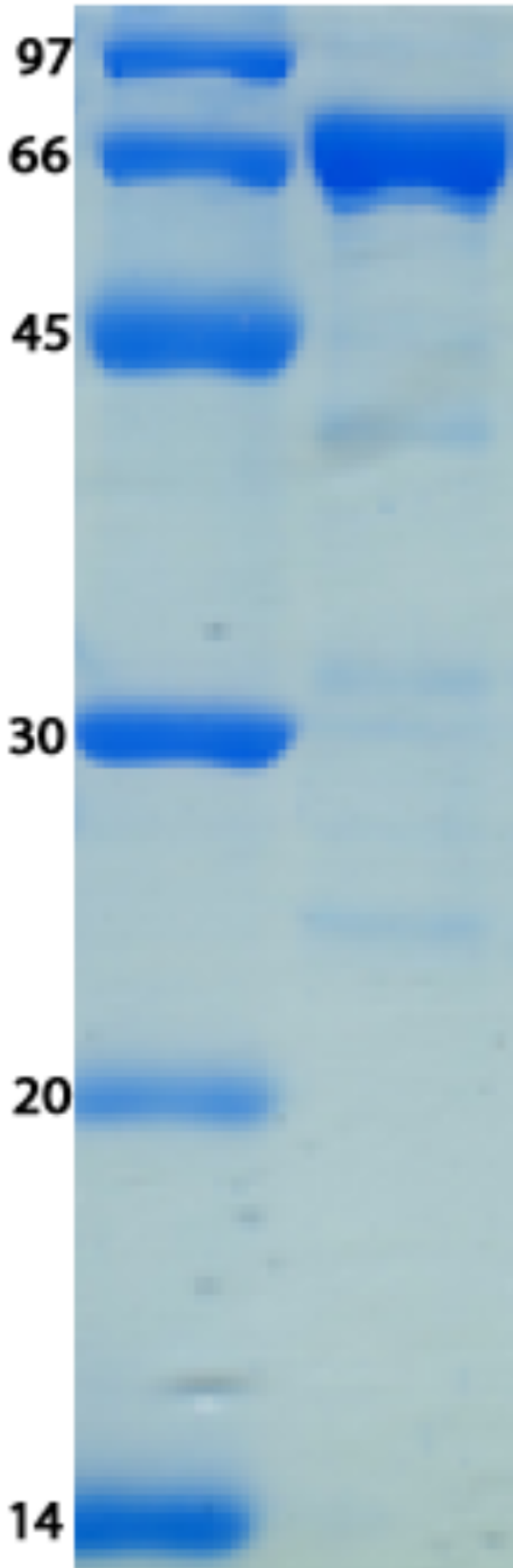
**-70 °C**

Theoretical PI:

**6.14**

Gel Information :

**Gel Image 1:**



Native Sequence:

**Amino acids T165 – S564 of human HIPK2. [Full length protein ends at residue S1171] Residue T235 of the fusion protein is equivalent to T165 of the native enzyme. The GST tag is located at residues 1 – 220.**

Protease Cleavage:

**PreScission (LEVLFQGPL) residues 221 - 229**

Cloning Sites:

**EcoR1 sites of pGEX 6P-1**

Price per aliquot (100µg):

**£110.00**