



## EF2 Kinase (2 - 725)

Catalog Number (DU Number):

**DU1446**

Accession:

**AAH32665**

Expression

**bacteria**

Terminus and Tag:

**N-Term GST Uncleaved**

Purification Method:

**GSH Sepharose**

Enzymatic Assay Format:

**Standard filter binding assay**

Assay Buffer:

**50 mM Hepes pH 6.6, 200  $\mu$ M CaCl<sub>2</sub>, 0.3  $\mu$ M calmodulin, 0.1 % 2 mercaptoethanol, 10 mM magnesium acetate**

Assay Substrate:

**RKKFGESEKTKTKEFL [Residues 2020 – 2035 of Dictyostelium myosin heavy chains] Final concentration: 300  $\mu$ M**

Calculated Molecular Mass:

**Mono-Isotopic Mass: 108, 283.87 daltons**

**Average Mass: 108, 352.58 daltons**

Protein Activity:

**Constitutively Active**

Purity:

**90 %**

Storage Buffer:

**50 mM Tris-HCl pH 7.5, 270 mM Sucrose, 150 mM NaCl, 0.1 mM EGTA, 0.1 % 2-mercaptoethanol, 0.02 % Brij-35, 1 mM benzamidine, 0.2 mM PMSF**

Storage Temperature:

**-70 °C**

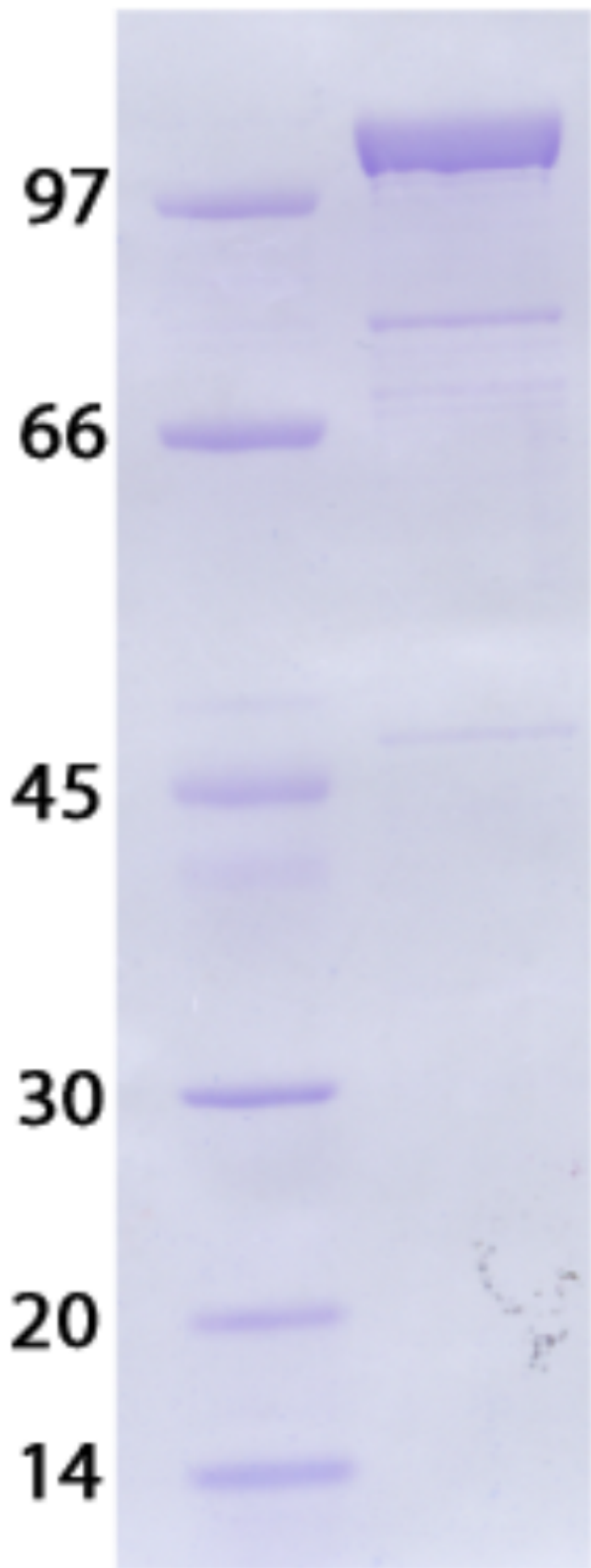
Theoretical PI:

**5.32**

Gel Information :

**Gel Image 1:**





Native Sequence:

**Amino acids A2 – E725 (end) of human EF2 kinase. Residue A227 of the fusion protein is equivalent to A2 of the native enzyme. The GST tag is located at residues 1 - 220.**

Protease Cleavage:

**Thrombin (LVPRGS) residues 221 - 226**

Cloning Sites:

**BamH1 and EcoR1 site of pGEX 4T-1**

Price per aliquot (100µg):

**£110.00**