



## KLHL3

Full Name:

**KLHL3**

Long Name Text:

**kelch-like family member 3**

Immuno Sequence:

**KLHL3 (GST cleaved) [DU 23176]**

DU Number of Antigen:

**DU23176**

Aliases

**KLHL3**

Sheep No:

**S389D**

Tag Information

**GST tag has been cleaved.**

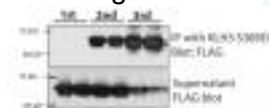
Monoclonal/Polyclonal:

**Polyclonal**

Purification Method:

**Affinity purified against GST-KLHL3.**

Gel Image:



***FLAG-KLHL3 (human) was overexpressed in HEK293 cells. KLHL3 was immunoprecipitated from 200 ug of total lysate using 5 ug of anti-KLHL3 S389D. The immunoprecipitate and supernatant was then immunoblotted using anti-FLAG.***



Date Added:

**September 2012**

Price per aliquot (100µg):

**£110.00**