



BTBD12 (SLX4)

Full Name:

BTBD12 (1266-end mouse)

Long Name Text:

BTB (POZ) domain containing 12

Immuno Sequence:

GST-BTBD12 (1266-end mouse) [DU 19681]

Phosphopeptide:

GST-BTBD12 (1266-end mouse) [DU 19681]

DU Number of Antigen:

DU19681

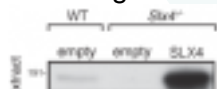
Sheep No:

S819C

Monoclonal/Polyclonal:

Polyclonal

Gel Image:



25 ug of whole cell extract from wildtype MEFs, SLX4 null MEFs or SLX4 null MEFs complemented with wildtype SLX4 were subjected to SDS-Page, before being immunoblotted with 0.2 ug/ml of anti-SLX4 (1266-end mouse) antibody.

Price per aliquot (100µg):

£110.00