



## Ribosomal S6 protein

Full Name:

**Ribosomal S6 protein phospho Ser 235**

Long Name Text:

**Ribosomal S6 protein**

Immuno Sequence:

**AKRRRKS\*SLRASTS [residues 229 - 242 of human]**

Phosphopeptide:

**AKRRRKSSLRSTS [residues 229 - 242 of human]**

Sheep No:

**S441A**

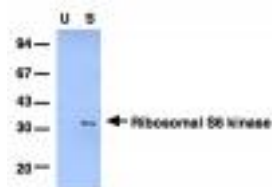
Monoclonal/Polyclonal:

**Polyclonal**

Purification Method:

**Affinity purified against phospho-specific peptide.**

Gel Image:



**20 µg of unstimulated (U) and IGF stimulated (S) 293 cell lysates were separated by SDS-Page transferred to nitrocellulose membrane and blotted with the anti-ribosomal S6 phospho Ser 235 antibody at 1 µg/ml in the presence of 10 µg/ml of the non-phosphorylated peptide. Binding of the primary antibody was detected using rabbit peroxidase conjugated anti-sheep IgG (1 in 10,000 dilution, Pierce) followed by enhanced chemiluminescence (ECL, Amersham).**

Price per aliquot (100µg):

**£110.00**