



METTL1

Full Name:

METTL1 (258 - 268)

Long Name Text:

Methyltransferase like 1

Immuno Sequence:

KQAVTPNPTLP [residues 258 - 268 of human]

Phosphopeptide:

KQAVTPNPTLP [residues 258 - 268 of human]

Sheep No:

S177B

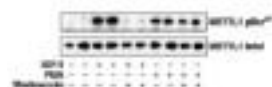
Monoclonal/Polyclonal:

Polyclonal

Purification Method:

Affinity purified against phospho peptide.

Gel Image:



HEK 293 cells were serum starved for 8 hours and then incubated for 20 mins without (-) or with (+) 100 nM wortmannin before stimulation for a further 15 mins with 20 ng/ml IGF-1 or for 30 mins with 400 ng/ml PMA. The cells were lysed and METTL1 was immunoprecipitated from 1.5 mg of extract using 5 µg anti-METTL1 (S177B). The immunoprecipitate was denatured in SDS, subjected to SDS/PAGE and transferred to nitrocellulose membranes. The membranes were immunoblotted with an antibody that recognises METTL1 phosphorylated at Ser 27 (anti-METTL1 phospho Ser 27 S793A) and with an antibody that recognises the phosphorylated and unphosphorylated forms of METTL1 equally well (anti-METTL1 S177B). Binding of the primary antibody was detected using rabbit peroxidase conjugated anti-sheep IgG antibody (1 in 10,000 dilution, Pierce) followed by enhanced chemiluminescence (ECL, Amersham).

Publication:

[The tRNA methylase METTL1 is phosphorylated and inactivated by PKB and RSK in vitro and in cells.](#)

Price per aliquot (100µg):

£110.00