



GFAT1

Full Name:

GFAT1 phospho Ser 243

Long Name Text:

Glutamine-fructose-6-phosphate transaminase 1

Immuno Sequence:

RVDS*TTCLFPVE [residues 240 - 251 of human]

Phosphopeptide:

RVDSTTCLFPVE [residues 240 - 251 of human]

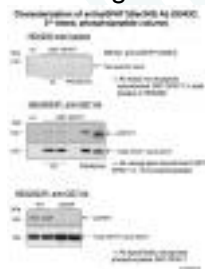
Sheep No:

S343C

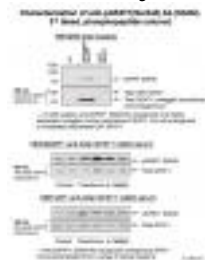
Monoclonal/Polyclonal:

Polyclonal

Gel Image:



WB Conditions: Blocking: 5% milk in TBS/0.1% Tween 20, 60 min, RT, rocking platform pGFAT Ab (3rd bleed): 1 µg/ml in 5% milk in TBS/0.1% Tween 20 plus non-phosphopeptide: 10 µg/ml Incubate on a screw platform for Falcon tubes for overnight, 4°C Washing: 3x10 min with TBS/0.1% Tween, rocking platform Secondary Ab: anti-sheep HRP-labeled IgG (Pierce), 1:3000 in 5% milk in TBS/0.1% Tween 20, 1h, RT, rocking platform Hemiluminescence detection: ECL Western Blotting Detection Reagents (Amersham, GE Healthcare, #RPN2106) NB! For detection endogenous pGFAT1 the only difference in protocol was a use of 1:5000 dilution for the secondary antibody.





In total lysates of a range of cell types with decent GFAT expression, anti- pGFAT1 Ab readily recognizes a protein with molecular weight corresponding to endogenous GFAT1. However, for more confidence and better quality of pictures, immunoprecipitation of GFAT is recommended.

Price per aliquot (100µg):
£110.00

