



AS160

Full Name:

AS160 phospho Ser 666

Long Name Text:

AKT substrate 160 kDa

Immuno Sequence:

CAQGVRV*PLLRQS [residues 661 - 672 of human]

Phosphopeptide:

CAQGVRVPLLRQS [residues 661 - 672 of human]

Aliases

TBC1D4

Sheep No:

S924B

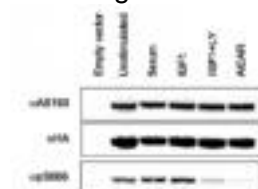
Monoclonal/Polyclonal:

Polyclonal

Purification Method:

Affinity purified against phospho peptide.

Gel Image:



HEK293 cells transfected with HA-AS160A were stimulated as indicated. Crude lysates (60 µg) were probed for binding to the antibodies as indicated along the left hand side and visualised using secondary antibodies that were detected using the Odyssey Infrared Imaging System (LI-COR Inc.). The cells transfected with empty vector were serum starved before harvesting.

Publication:

[Regulation of multisite phosphorylation and 14-3-3 binding of AS160 in response to IGF-1, EGF, PMA and AICAR](#)

Price per aliquot (100µg):

£110.00