



AS160

Full Name:

AS160 phospho Thr 568

Long Name Text:

AKT substrate 160 kDa

Immuno Sequence:

CKAKRSLT*SSLENI [residues 562 - 574 of human]

Phosphopeptide:

CKAKRSLTSSLENI [residues 562 - 574 of human]

Aliases

TBC1D4

Sheep No:

S028C

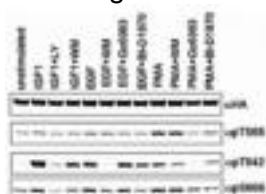
Monoclonal/Polyclonal:

Polyclonal

Purification Method:

Affinity purified against phospho peptide.

Gel Image:



HEK293 cells transfected with HA-AS160A were stimulated after pre-exposure to inhibitors as indicated. Crude lysates (60 µg) were subjected to SDS-Page followed by immunoblotting with anti-HA, anti-AS160 phospho Thr 568 [S028C], anti-AS160 phospho Thr 642 [S887B] and anti-AS160 phospho Ser 666 [S924B] antibodies. Binding of the primary antibody was detected using rabbit peroxidase conjugated anti-sheep IgG antibody (1 in 10,000 dilution, Pierce) followed by enhanced chemiluminescence (ECL, Amersham).

Publication:

[Regulation of multisite phosphorylation and 14-3-3 binding of AS160 in response to IGF-1, EGF, PMA and AICAR.](#)

Price per aliquot (100µg):

£110.00